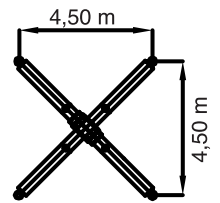
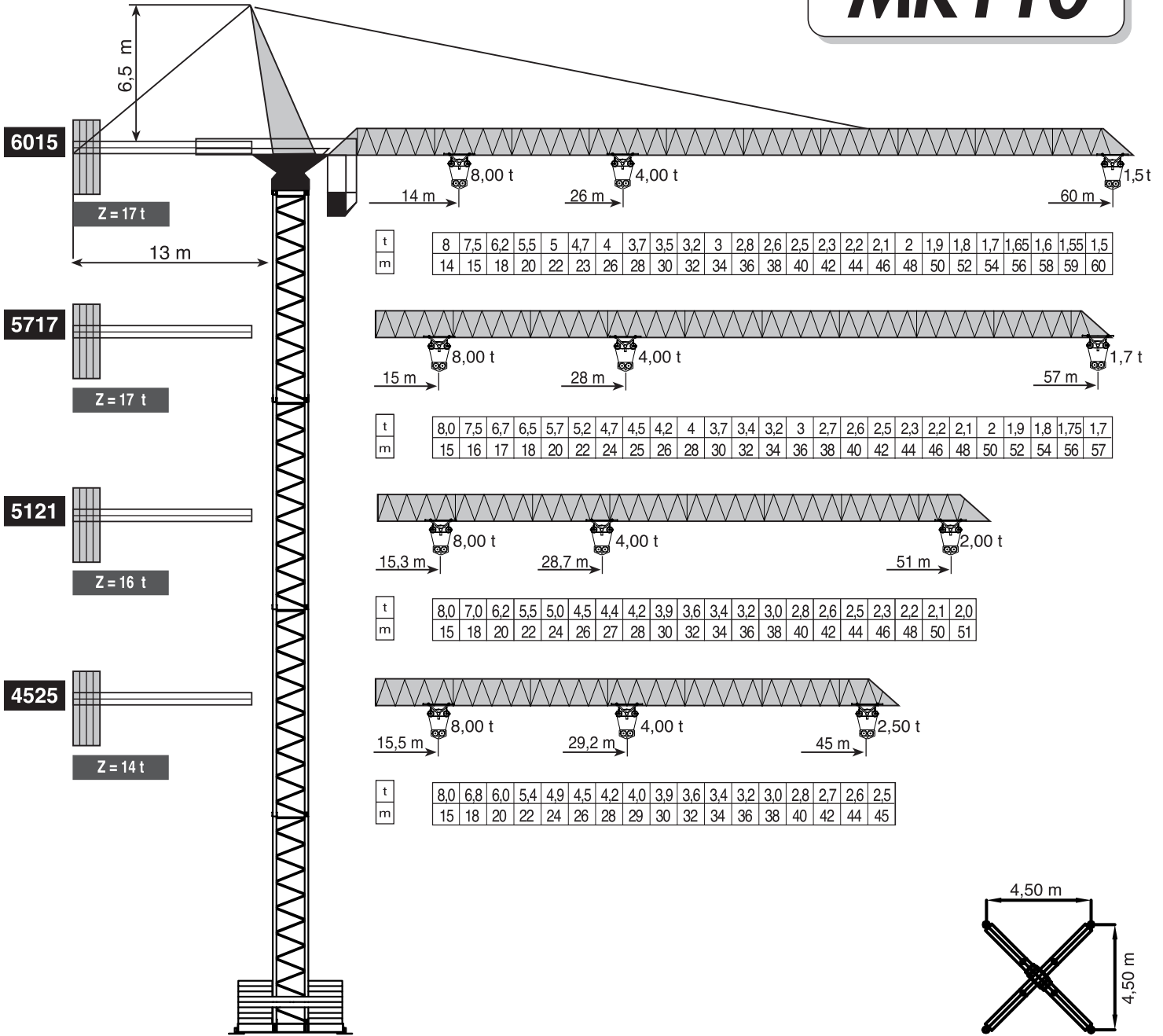




# MK110

RAV 1

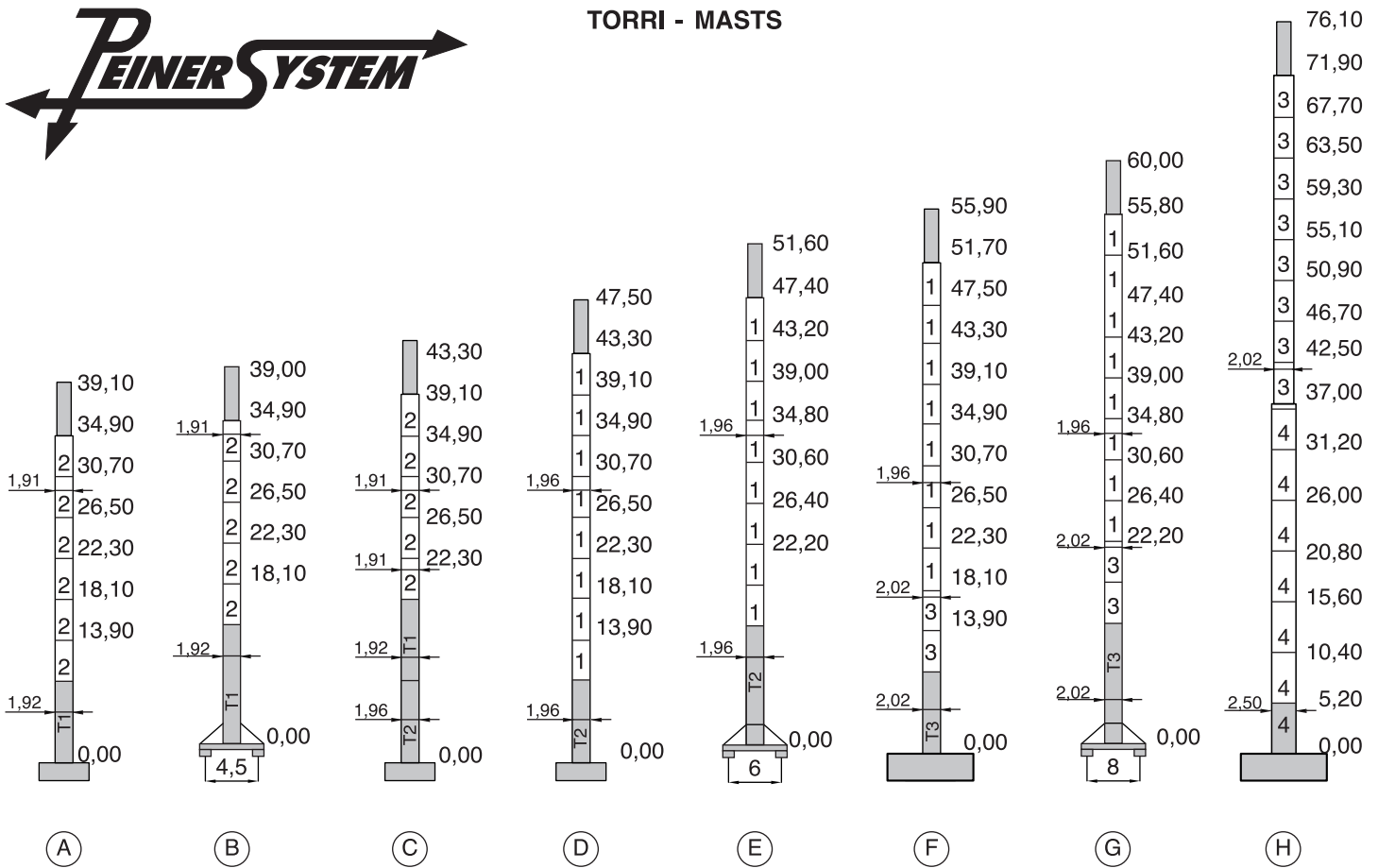
Dati tecnici, disegni e fotografie sono indicativi e possono essere modificati senza preavviso - Technical data, drawings and pictures are displayed purely as an indication and subject to modification without prior notice.



CE DIN 15018-H1B3 EN 14439:2009

**ALTEZZA MASSIMA CON ANCORAGGI MT. 200  
MT. 200 POSSIBLE MAX HEIGHT WITH ANCHORAGE FRAME**

DENOMINAZIONE DENOMINATION	SCHEMA/SKETCH	A (m)	B (m)	C (m)	PESO/WEIGHT (kg)
ELEMENTO BRACCIO BR19 <i>JIB ELEMENT BR19</i>		10,30	1,46	1,75	1650
ELEMENTO BRACCIO BR22 <i>JIB ELEMENT BR22</i>		5,80	1,46	1,75	750
ELEMENTO BRACCIO BR22 <i>JIB ELEMENT BR22</i>		5,80	1,46	1,75	750
ELEMENTO BRACCIO BR29 <i>JIB ELEMENT BR29</i>		11,75	1,46	1,75	1460
ELEMENTO BRACCIO BR25 <i>JIB ELEMENT BR25</i>		5,80	1,46	1,75	490
ELEMENTO BRACCIO BR26 <i>JIB ELEMENT BR26</i>		5,80	1,46	1,75	450
ELEMENTO BRACCIO BR27 <i>JIB ELEMENT BR27</i>		5,80	1,46	1,75	350
ELEMENTO BRACCIO BR27 <i>JIB ELEMENT BR27</i>		5,80	1,46	1,75	350
ELEMENTO BRACCIO BR28 <i>JIB ELEMENT BR28</i>		3,00	1,46	1,75	170
GRUPPO ROTAZIONE <i>SLEWING GROUP</i>		3,80	2,30	3,15	5000
CUSPIDE <i>SPIRE</i>		6,97	1,60	1,13	1300
CONTROFRECCIA <i>COUNTERJIB</i>		13,00	1,60	0,50	1020
TELAIO BASE T1 <i>BASE ELEMENT T1</i>		8,59	1,96	1,96	1680
TELAIO INTERMEDIO 2 <i>INTERMEDIATE ELEMENT 2</i>		4,42	1,96	1,96	900
TELAIO INTERNO <i>INNER ELEMENT</i>		8,45	1,75	1,75	2280
TELAIO BASE T2 <i>BASE ELEMENT T2</i>		8,69	2,04	2,04	2900
TELAIO INTERMEDIO 1 <i>INTERMEDIATE ELEMENT 1</i>		4,42	2,04	2,04	1580
TELAIO BASE T3 <i>BASE ELEMENT T3</i>		8,69	2,08	2,08	3480
TELAIO INTERMEDIO 3 <i>INTERMEDIATE ELEMENT 3</i>		4,42	2,08	2,08	1650
TELAIO INTERMEDIO 4 <i>INTERMEDIATE ELEMENT 4</i>		6,00	2,70	2,70	2200
TORRE MONOLITICA 1.96 M <i>MONOLITIC TOWER 1.96 M</i>		11,80 9,00	2,04 2,04	2,04 2,04	3000 2200
TORRE MONOLITICA 2.02 M <i>MONOLITIC TOWER 2.02 M</i>		9,00	2,08	2,08	3100

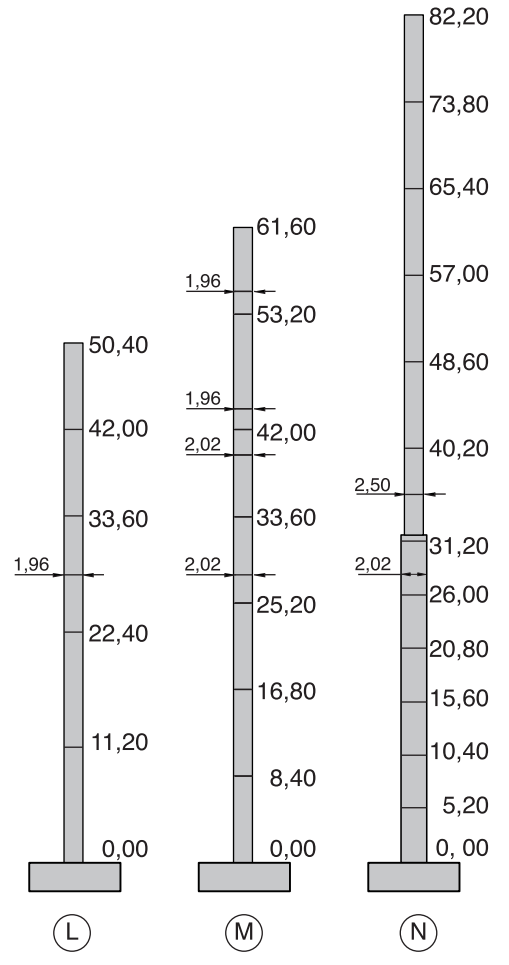


ARGANI DI SOLLEVAMENTO - HOISTING WINCHES								
Hp	m/1'	Kg	Kg	Hp	m/1'	Kg	Kg	
	40	66/33	2000	4000	50	72/36	2250	4500
		45/22	3000	6000		48/24	3500	7000
		30/15	4000	8000		35/17	4000	8000
		25/12	4000	8000		25/12	4000	8000
		5/2,5	4000	8000		5/2,5	4000	8000

VERSIONE CON TORRE MONOLITICA  
MONOLITIC TOWER VERSION

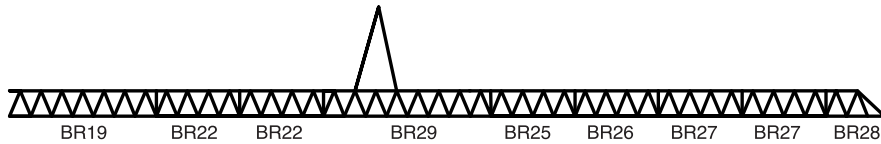
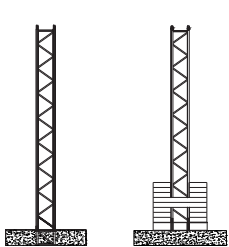
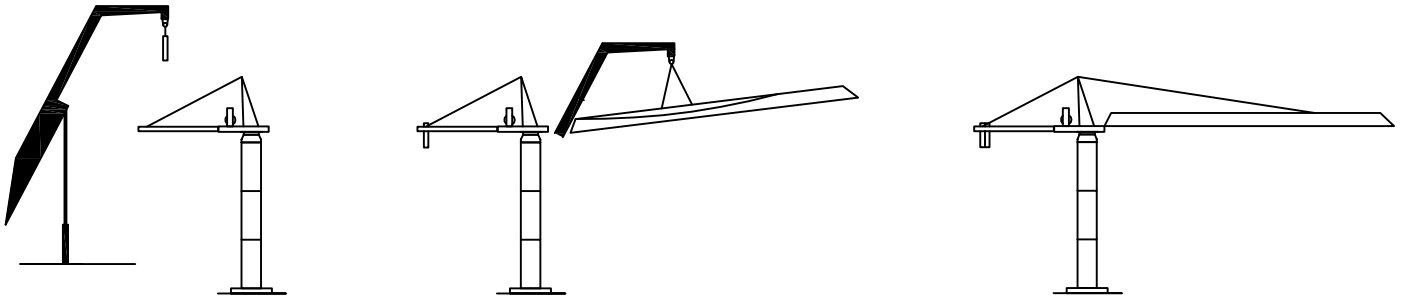
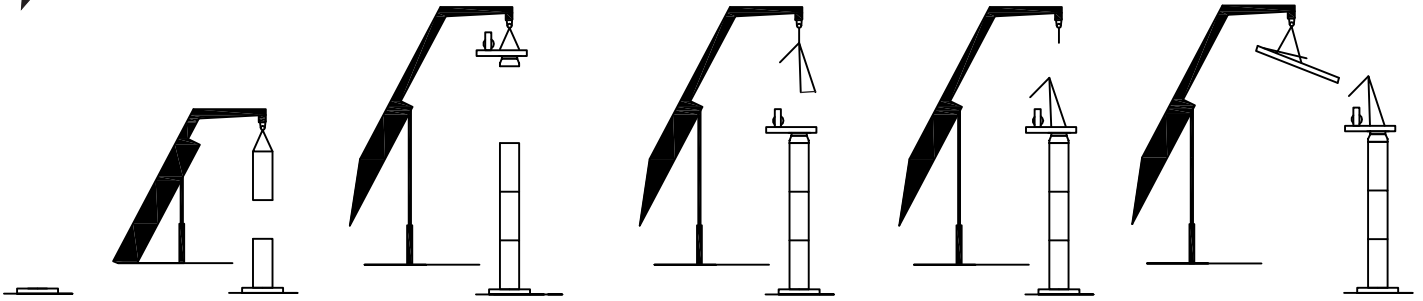
SENZA CARICO LA VELOCITÀ DI SOLLEVAMENTO AUMENTA DEL 20%  
HOISTING SPEED INCREASE MORE THAN 20% WITHOUT LOAD

380/440V	ARGANO	POTENZA MAX	GRUPPO GEN.
50/60 HZ	WINCH	MAIN SUPPLY	GENER.
	40 HP	50 KVA	85 KVA
	50 HP	65 KVA	100 KVA

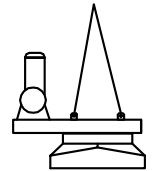


	3 KW	10/25/50 m/1'	R56
	2x65 Nm	0-0,8 rpm	ROT. F.

- 1 - 1,96 x 1,96 mt
- 2 - 1,91 x 1,91 mt
- 3 - 2,02 x 2,02 mt
- 4 - 2,50 x 2,50 mt



PESO/WEIGHT KG 6500



PESO/WEIGHT KG 5000

DIMENSIONE TORRE (mt) / MAST DIMENSION										
ALTEZZA LIBERA HEIGHT (mt)	1,91 x 1,91 (mt)	1,92 x 1,92 (mt)	1,96 x 1,96 (mt)			2,02 x 2,02 (mt)		2,50 x 2,50 (mt)	TELAIO INTERNO	TELAIO RACCORDO
	4,20	8,40	4,20	8,40	11,20	4,20	8,40	5,20	5,50	0,60
34,90	5	1							1	
39,10	6	1							1	
43,30	5	1		1					1	
47,50			8	1					1	
55,90						2	1		1	
59,30			8			5		7	1	1
63,50						5		7	1	1
67,70						6		7	1	1
71,90						1		7	1	1
76,10						7		8	1	1
50,40				2	3					
53,20					1		5			
61,60					1		6			
73,80							5	6		1
82,20							6	6		1