

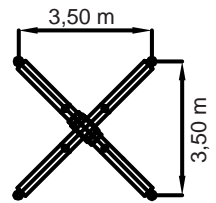
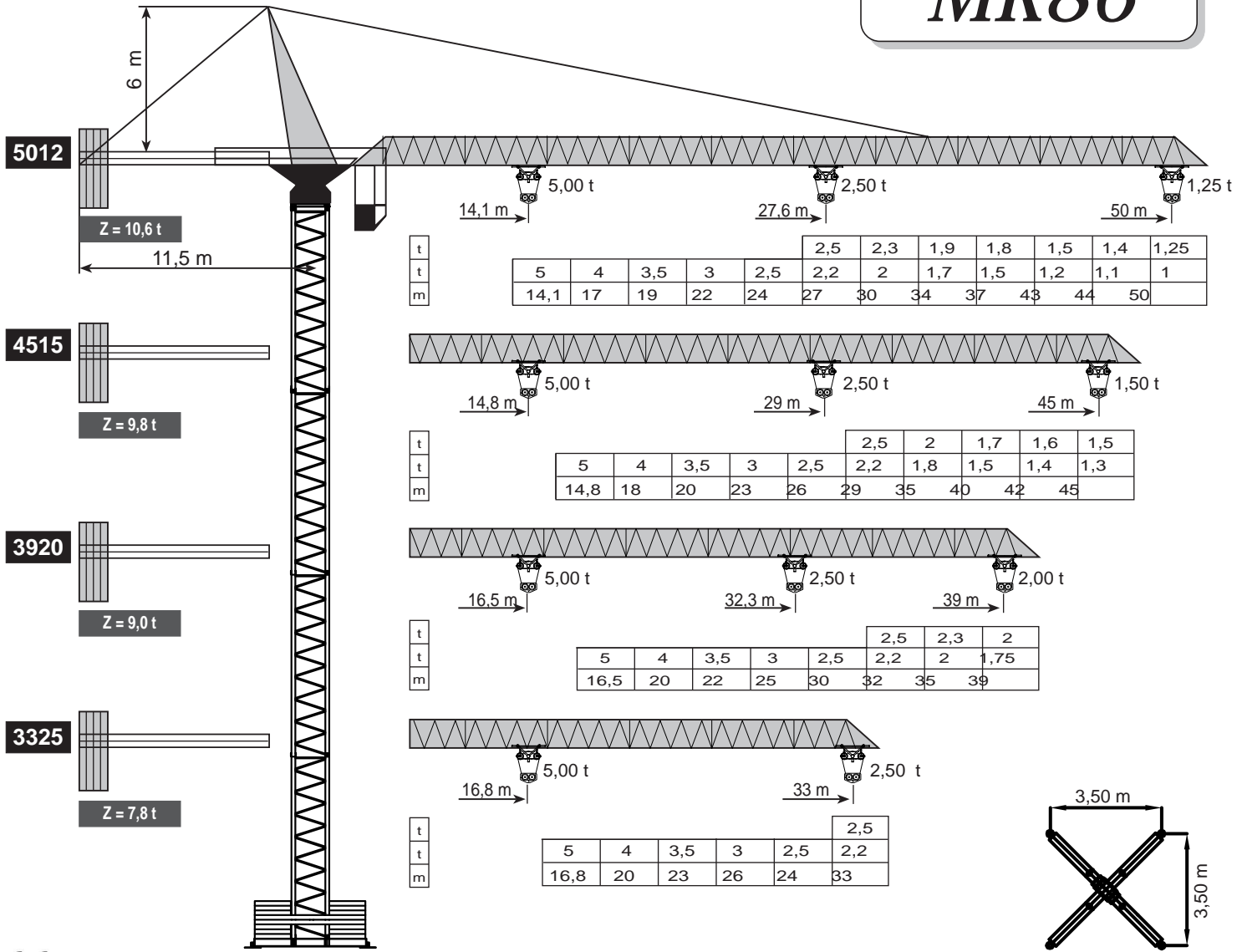


s.p.a.



# MK86

Dati tecnici, disegni e fotografie sono indicativi e possono essere modificati senza preavviso - Technical data, drawings and pictures are displayed purely as an indication and subject to modification without prior notice.

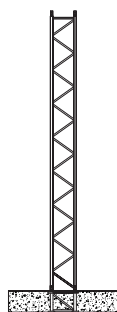


CE DIN 15018-H1B3 EN 14439:2009

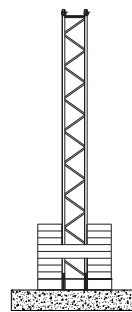
- 32,40 m
- 43,20 m
- 54,00 m
- 64,40 m
- ▲ 75,60 m

- 1,20 x 1,20 m
- 1,20 x 1,20 m
- 1,40 x 1,40 m
- 1,96 x 1,96 m
- ▲ 2,02 x 2,02 m

H =  
ALTEZZA DI TORRE  
TOWER HEIGHT

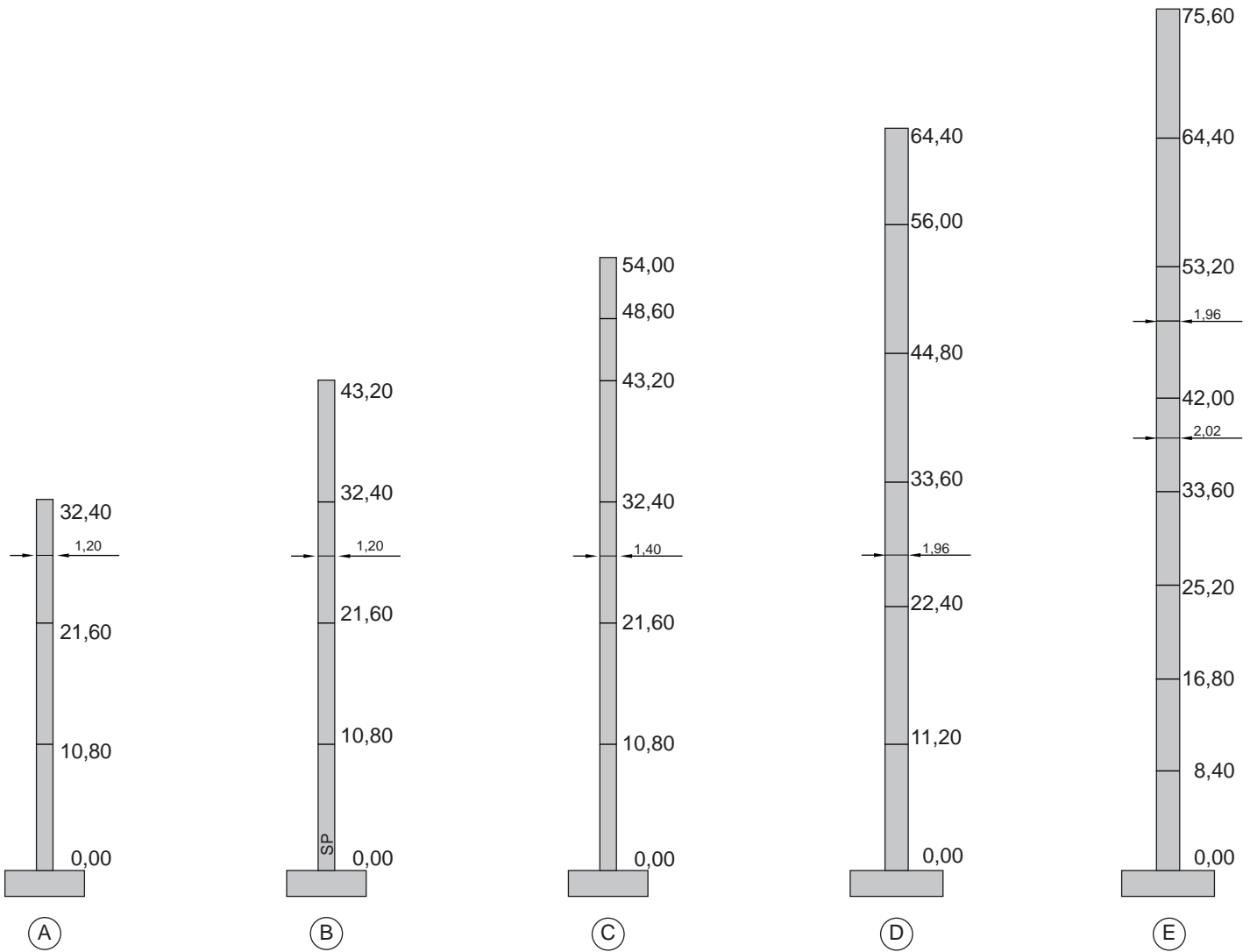


FISSA  
FIXED



CARRO SENZA STABILIZZATORI  
CARRIAGE WITHOUT STABILIZER

DENOMINAZIONE DENOMINATION	SCHEMA/SKETCH	A (m)	B (m)	C (m)	PESO/WEIGHT (kg)
Carro Base H=32,40m e 43,30 carriage		3,50 4,00	3,50 4,00	0,55 0,55	2.860 3.220
Telaio base Mast		11,30 5,70	1,22 1,22	1,22 1,22	2.900 1.620
Telaio base Mast		11,30	1,22	1,22	4.200
Telaio base Mast		11,30 5,70	1,50 1,50	1,50 1,50	3.200 1.900
Telaio base Mast		11,80 9,00	1,96 1,96	1,96 1,96	4.000 3.200
Telaio base Mast		9,00	9,00	2,02	4.400
Controfreccia Counter jib		10,00	1,19	0,45	800
Zavorra di volata Counter weight		var.	var.	var.	var.
Elemento braccio BR12 Counter weight		10,15	1,16	1,49	960
Elemento braccio BR13 Jib section BR13		11,60	1,16	1,49	800
Elemento braccio BR14 Jib section BR14		5,80	1,16	1,49	380
Elemento braccio BR15 Jib section BR15		5,80	1,16	1,49	380
Elemento braccio BR16 Jib section BR16		5,80	1,16	1,49	260
Elemento braccio BR17 Jib section BR17		5,80	1,16	1,49	240
Elemento braccio BR18 Jib section BR18		5,80	1,16	1,49	200
Rotazione Slewing group		2,40	2,15	1,34	3.500



ARGANI DI SOLLEVAMENTO - HOISTING WINCHES

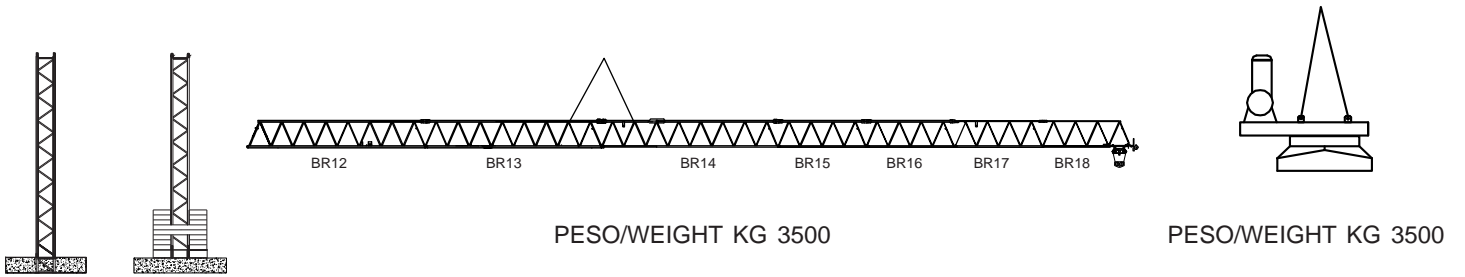
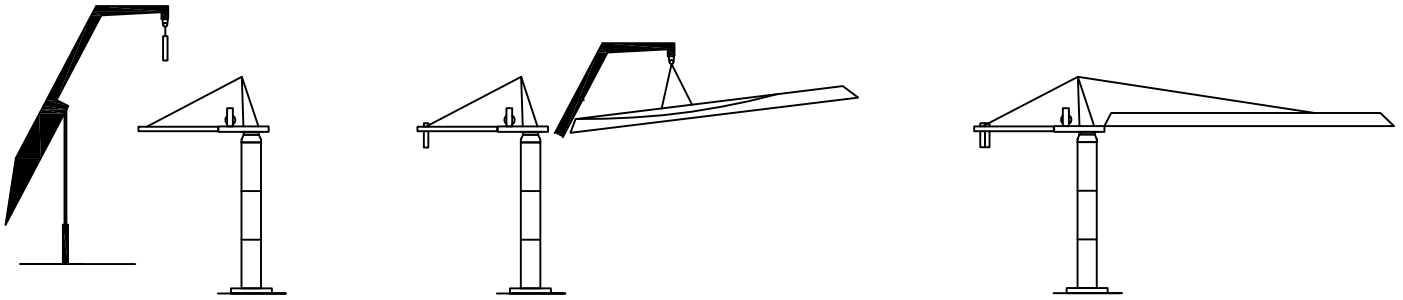
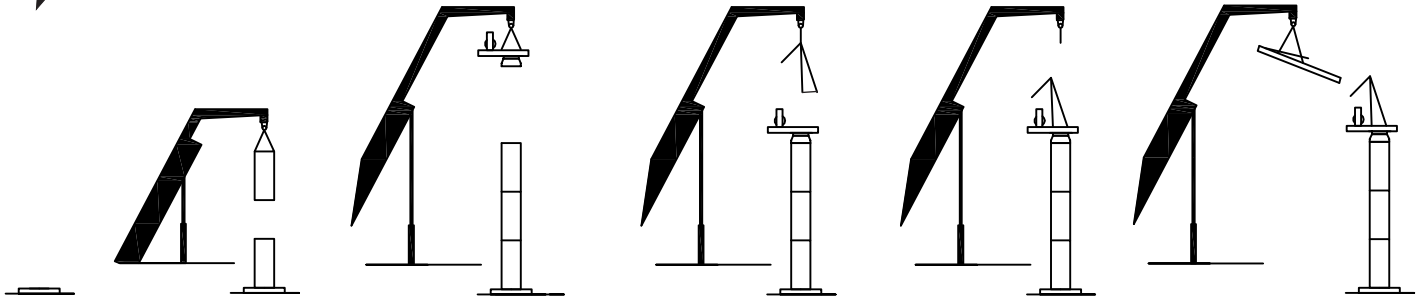
	Hp	m/1'	Kg	Hp	m/1'	Kg
	15	50/25	1250/2500	25	70/35	1250/2500
		25/12	2500/5000		35/17	2500/5000
		5/2,5	2500/5000		8/4	2500/5000

380/440V	ARGANO	POTENZA MAX	GRUPPO GEN.
50/60 HZ	WINCH	MAIN SUPPLY	GENER.
	15 HP	18 KVA	36 KVA
	25 HP	31 KVA	55 KVA

	1.3/0.9 KW	25/50 m/1'	R56
	65 Nm	0-0,8 rpm m/1'	ROT. F.

SENZA CARICO LA VELOCITÀ DI SOLLEVAMENTO AUMENTA DEL 20%  
HOISTING SPEED INCREASE MORE THAN 20% WITHOUT LOAD

PER ALTEZZE SUPERIORI A 43,20 m  
SONO ADOTTATE 5 VELOCITÀ DI SOLLEVAMENTO  
FOR SUPERIOR HEIGHT OF mt 43,20 ADOPTED  
5 SPEEDS OF HOISTING



DIMENSIONE TORRE (mt) / MAST DIMENSION								
ALTEZZA LIBERA HEIGHT (mt)	1,20 x 1,20 (mt)			1,40 x 1,40 (mt)		1,96 x 1,96 (mt)		2,02 x 2,02 (mt)
	10,80	5,40	10,80	10,80	5,40	11,20	8,40	8,40
21,60	2							
27,00	2	1						
32,40	3/2	0/2						
37,80	2	1	1SP					
43,20	3/2	0/2	1SP					
48,60				4	1			
54,00				5				
64,40						5	1	
72,80						2	1	5
75,60						3		5