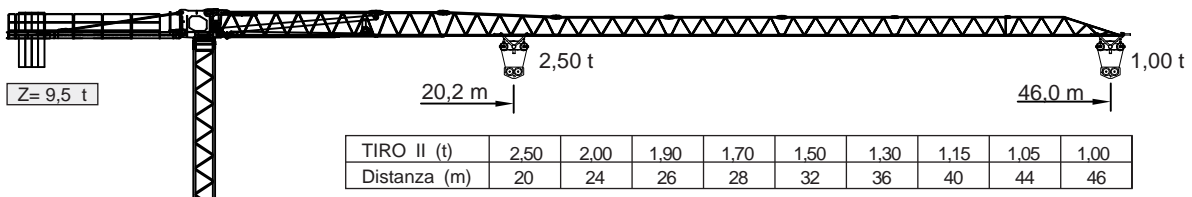




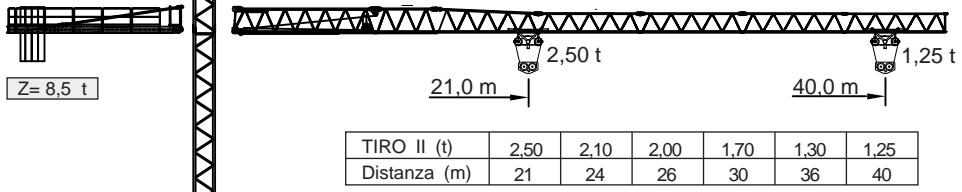
JT46 SW

Dati tecnici, disegni e fotografie sono indicativi e possono essere modificati senza preavviso - Technical data, drawings and pictures are displayed purely as an indication and subject to modification without prior notice.

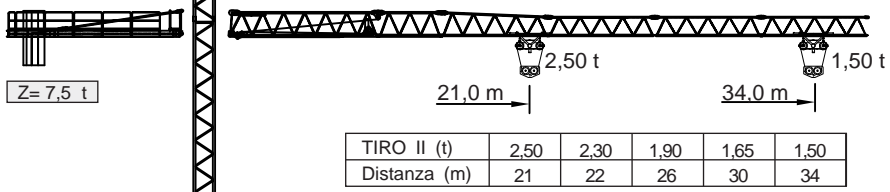
4610



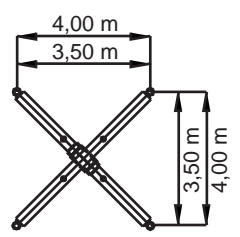
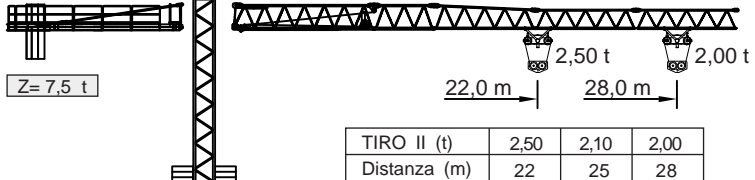
4012



3415

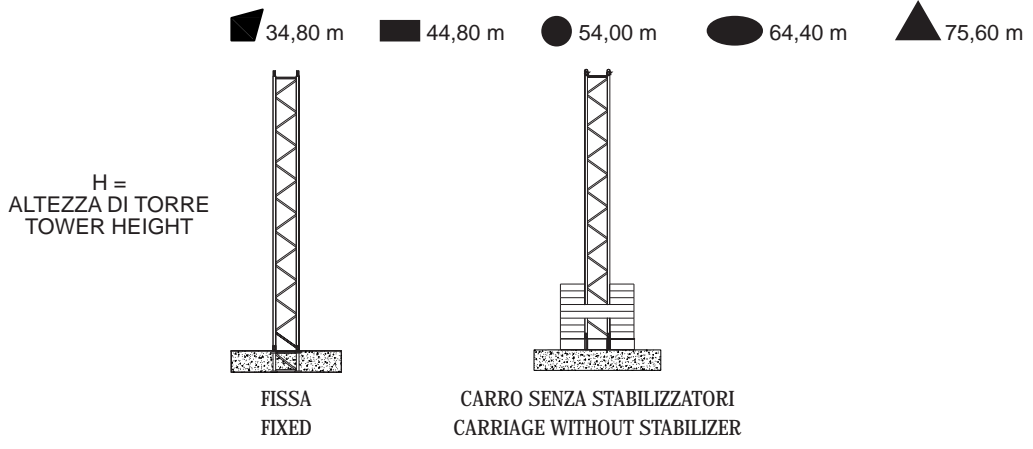


2820

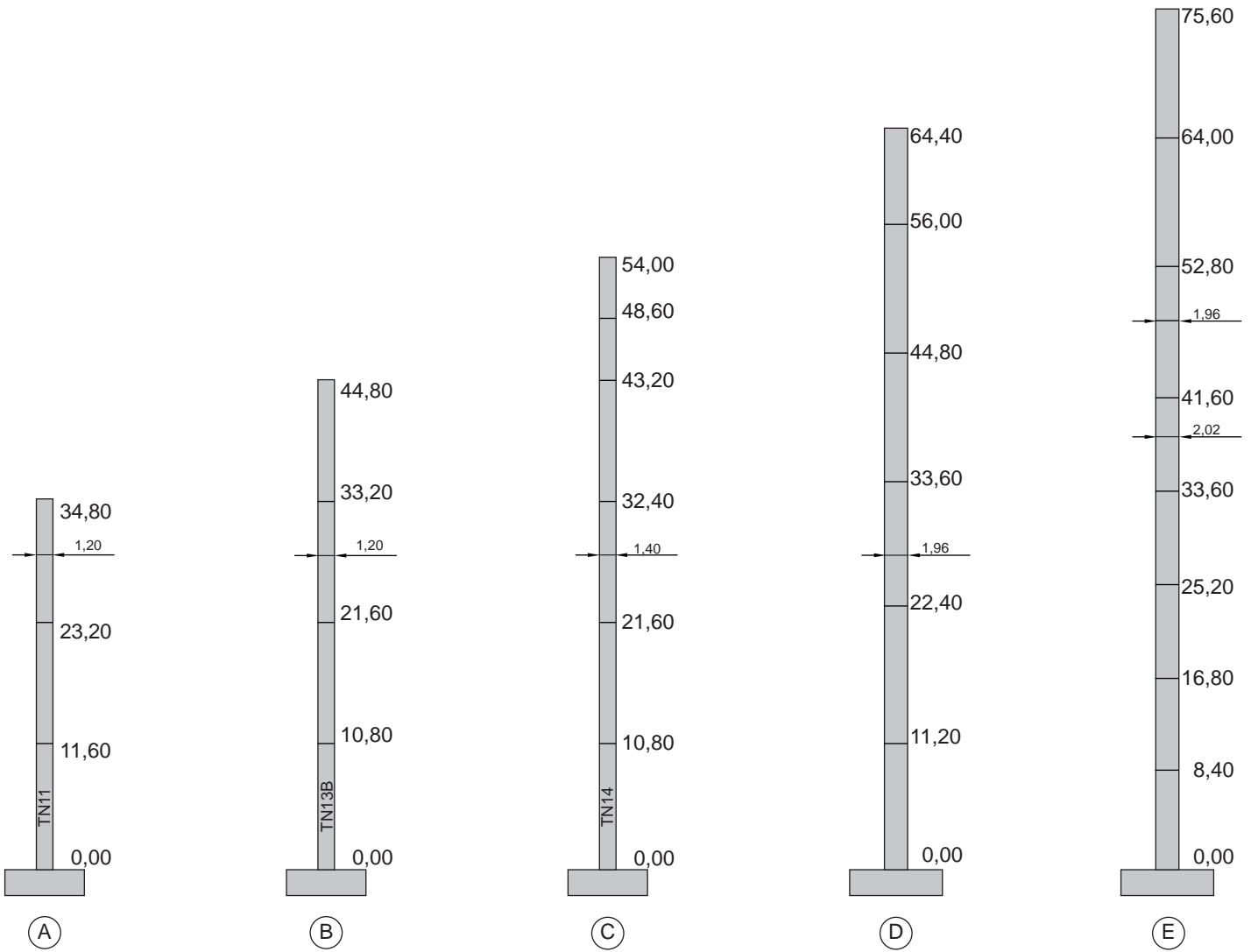


CE DIN 15018-H1B3 EN 14439:2009

- 1,20 x 1,20 m JT46 SW
- 1,20 x 1,20 m MK 86
- 1,40 x 1,40 m MK 100
- 1,96 x 1,96 m MK 160
- 2,02 x 2,02 m MK 220



DENOMINAZIONE DENOMINATION	SCHEMA/SKETCH	A (m)	B (m)	C (m)	PESO/WEIGHT (kg)
Carro Base Carriage H=34,80 mt e 44,80 mt		3,50 4,00	3,50 4,00	0,55 0,55	2.860 3.220
Telaio base TN11 Mast TN11		10,80 5,40 11,60 5,80	1,20 1,20 1,20 1,20	1,20 1,20 1,20 1,20	2.900 1.620 2.700 1.400
Telaio base TN13B Mast TN13B		10,80	1,22	1,22	4.200
Telaio base TN14 Mast TN14		10,80 5,40	1,40 1,40	1,40 1,40	3.200 1.900
Telaio base Mast		11,20 8,40	1,96 1,96	1,96 1,96	4.000 3.200
Telaio base Mast		8,40	2,02	2,02	4.400
Rotazione Slewing group		2,40	2,15	1,34	3.500
Controfreccia Counterjib		8,00	0,40	1,20	600
Zavorra di volata Counter weight		Var.	Var.	Var.	Var.
Elemento braccio F1 Jib section F1		9,00	0,85	1,45	1.210
Elemento braccio F2 Jib section F2		6,35	0,80	1,24 ÷ 0,99	640
Elemento braccio E2 Jib section E2		6,35	0,80	1,10	505
Elemento braccio E3 Jib section E3		6,35	0,80	1,10	390
Elemento braccio E4 Jib section E4		6,35	0,80	1,10	275
Elemento braccio E5 Jib section E5		6,35	0,80	1,10	260
Elemento braccio E6 Jib section E6		6,35	0,80	1,10	225
Terminale per braccio Jib end		6,35	0,45	0,40	50



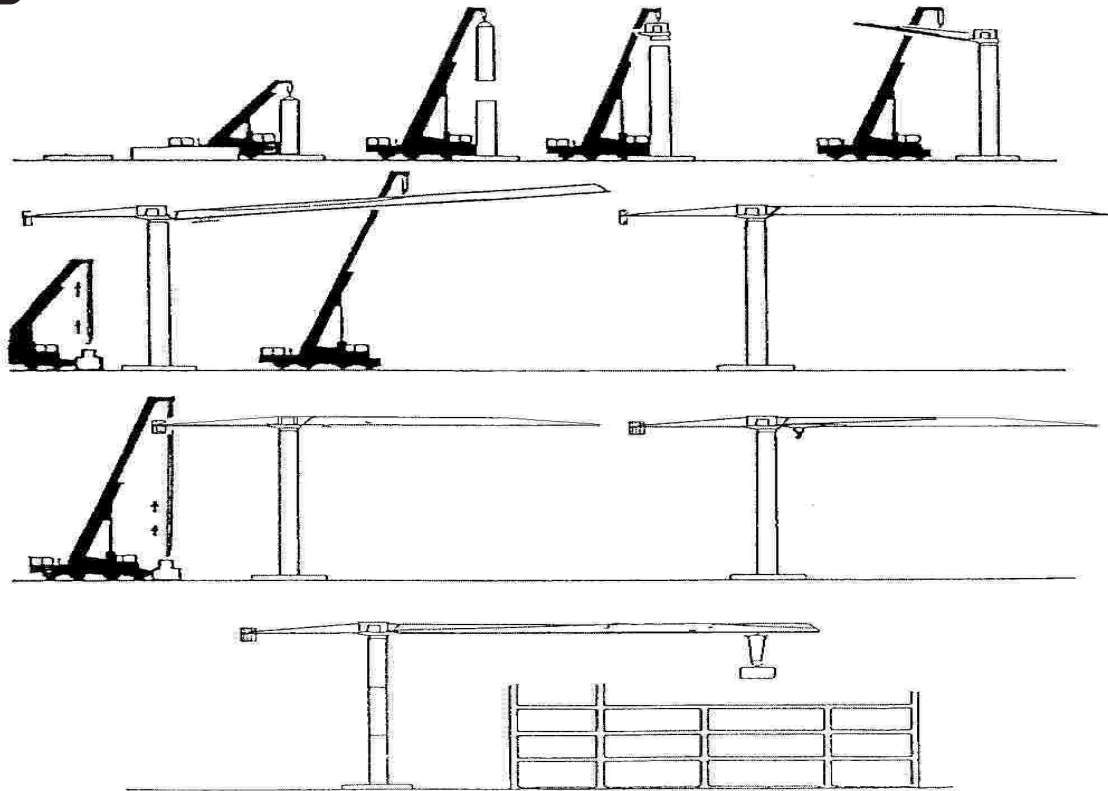
ARGANI DI SOLLEVAMENTO HOISTING WINCHES			
Hp	m/1'	Kg	
15	50	1250	
	25	2500	
	5	2500	

380/440V	ARGANO	POTENZA MAX	GRUPPO GEN.
50/60 HZ	WINCH	MAIN SUPPLY	GENER.
	15 HP	18 KVA	36 KVA

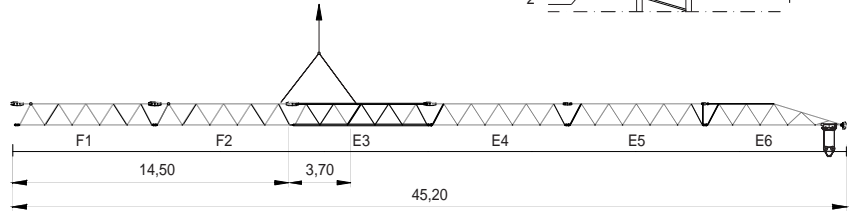
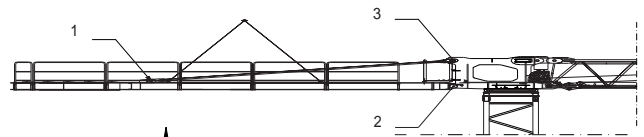
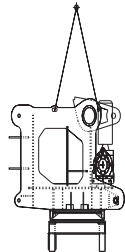
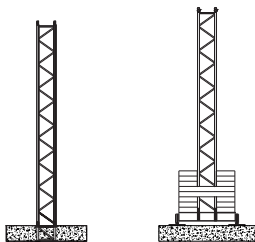
	1.3/0.9 KW	25/50 m/1'	R56
	45 Nm	0-0,8 rpm m/1'	ROT. F.

SENZA CARICO LA VELOCITÀ DI SOLLEVAMENTO AUMENTA DEL 20%
HOISTING SPEED INCREASE MORE THAN 20% WITHOUT LOAD

PER ALTEZZE SUPERIORI A 48,80 m
SONO ADOTTATE 5 VELOCITÀ DI SOLLEVAMENTO
FOR SUPERIOR HEIGHT OF mt 48,80 ADOPTED
5 SPEEDS OF HOISTING



PESO/WEIGHT KG 3500



PESO/WEIGHT KG 3700

DIMENSIONE TORRE (mt) / MAST DIMENSION										
ALTEZZA LIBERA HEIGHT (mt)	1,20 x 1,20 (mt)		1,20 x 1,20 (mt)			1,40 x 1,40 (mt)		1,96 x 1,96 (mt)		2,02 x 2,02 (mt)
	5,80	11,60	10,80	5,40	10,80	10,80	5,40	11,20	8,40	8,40
23,20		2								
29,00	1	2								
34,80	0/2	3/2								
44,80		2	1SP		1					
54,00						5				
64,40								5	1	
72,80								2	1	5
75,60								3		5